

**Panel mounted socket SCHUKO®**

Part no. 11013

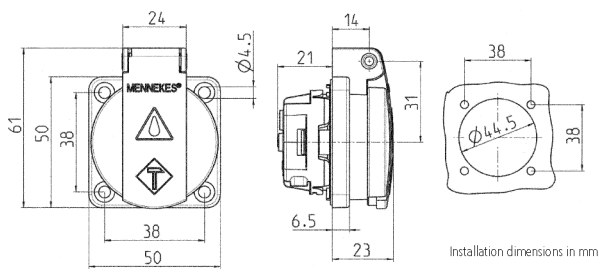


- for stationary use
- with hinged lid
- 3 plug-in terminals as connecting terminals for 1.5 – 2.5 mm<sup>2</sup>

**Technical specifications**

Ampere	16 A
Poles	2 p+E
Voltage	230 V
Connection technology	Plug-in terminals
Contact	standard
Protection type	IP 54
Shutter	false
Flange	50x50 mm
Fixing hole	38x38 mm
Weight	42 g
Declaration of Conformity	VDE, EAC, Kema

**Drawing**



Drawing  
1 MB 410  
Dim. in mm

Installation dimensions in mm