

EverGUM combination unit

Part no. 71064

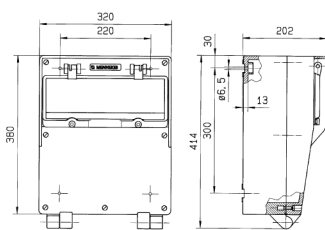


- solid rubber enclosure, signal yellow RAL 1003
- pre-wired for installation

Technical specifications

| | |
|---------------------------|---|
| CEE 32 A, 5 p, 400 V | 1 |
| CEE 16 A, 5 p, 400 V | 2 |
| SCHUKO® 16 A, 230 V | 4 |
| Fusing | <ul style="list-style-type: none"> • 1 RCD 63 A, 4 p, 0.03 A • 1 MCB 32 A, 3 p, C • 2 MCB's 16 A, 3 p, C • 2 MCB's 16 A, 1 p, B |
| Pre-fuse max. | 63 A |
| InA | 48 A |
| RDF | 0.5 |
| Connection / feeder cable | <ul style="list-style-type: none"> • for 2 cables up to 5 x 25 mm² |
| Protection type | IP 44 |
| Shutter | false |
| Enclosure material | Solid rubber |
| Weight | 11000 g |
| Height | 380 mm |
| Width | 320 mm |
| Declaration of Conformity | EAC |

Drawing



Drawing
5 MB 41

Dim. in mm