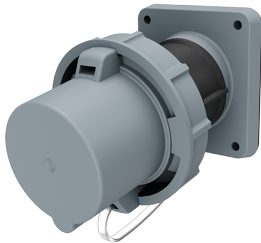


## Panel mounted inlet

Part no. 1257

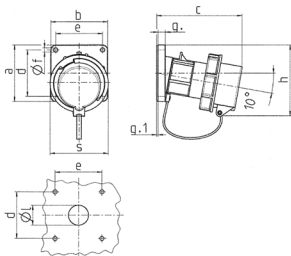


- screw terminals
- with protective cover

## Technical specifications

Ampere	63 A
Poles	4 p
Voltage	500 V
Clock position	7 h
Hertz	50-60 Hz
Connection technology	Screw terminals
Contact	standard
Protection type	IP67
Weight	659 g
Certifications	EAC

## Drawing



Drawing	Amp.	16			32			63				
		Poles		3	4	5	3	4	5	3	4	5
2 MB 62												
Dim. in mm		a	85	85	85	85	85	108	108	108		
		b	85	85	85	85	85	101	101	101		
		c	132	132	131	131	137	164	164	164		
		d	70	70	70	70	70	85	85	85		
		e	70	70	70	70	70	77	77	77		
		f	6.3	6.3	6.3	6.3	6.3	6.5	6.5	6.5		
		g.	11	11	11	11	11	12	12	12		
		g.1	2	2	2	2	2	2	2	2		
		h	100	107	108	108	111	130	130	130		
		s	70	87	94	94	102	114	114	114		
		l	30	30	30	30	30	40	40	40		
		Terminal for cond. cross	1	1	2,5	2,5	2,5	6	6	6		
		section (mm <sup>2</sup> ) min.-max.	—	2.5—2.5	—	6—6	—	—	16—16	—	—	—