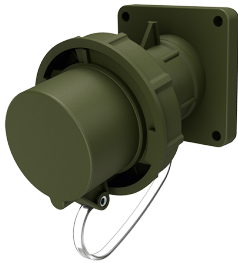


## Panel mounted inlet TM

Part no. 23249

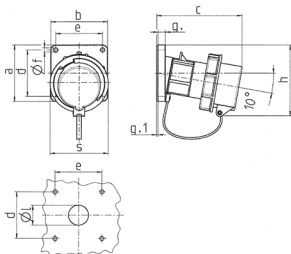


- screw terminals
- highly heat resistant contact carrier
- nickel plated contacts
- with protective cap
- (form BP)

## Technical specifications

|                       |   |
|-----------------------|---|
| Ampere                | 32 A  |
| Poles                 | 3 p   |
| Voltage               | 230 V   |
| Clock position        | 6 h   |
| Hertz                 | 50-60 Hz  |
| Connection technology | Screw terminals   |
| Contact               | nickel plated contacts, highly heat resistant contact carrier |
| Protection type       | IP67  |
| Weight                | 314 g   |
| Certifications        | VDE, EAC  |

## Drawing



| Drawing   | Amp. | 16       |      |      | 32   |      |        | 63     |        |     |
|---|------|----------|------|------|------|------|--------|--------|--------|-----|
|   |      | Poles    |      |      | 3    | 4    | 5      | 3      | 4      | 5   |
| 2 MB 62   |      |          |      |      |      |      |        |        |        |     |
| Dim. in mm  |      | a        | b    | c    | d    | e    | f      | g      | g.1    | h   |
|   |      | 85       | 85   | 85   | 85   | 85   | 108    | 108    | 108    | 101 |
|   |      | 85       | 85   | 85   | 85   | 85   | 101    | 101    | 101    | 132 |
|   |      | 132      | 132  | 131  | 131  | 137  | 164    | 164    | 164    | 70  |
|   |      | 70       | 70   | 70   | 70   | 70   | 85     | 85     | 85     | 70  |
|   |      | 70       | 70   | 70   | 70   | 70   | 77     | 77     | 77     | 6.3 |
|   |      | 6.3      | 6.3  | 6.3  | 6.3  | 6.3  | 6.5    | 6.5    | 6.5    | 11  |
|   |      | 11       | 11   | 11   | 11   | 11   | 12     | 12     | 12     | 2   |
|   |      | 2        | 2    | 2    | 2    | 2    | 2      | 2      | 2      | 100 |
|   |      | 100      | 107  | 108  | 108  | 111  | 130    | 130    | 130    | 70  |
|   |      | 70       | 87   | 94   | 94   | 102  | 114    | 114    | 114    | 30  |
|   |      | 30       | 30   | 30   | 30   | 30   | 40     | 40     | 40     | 1   |
|   |      | 1        | 1    | 2,5  | 2,5  | 2,5  | 6      | 6      | 6      |     |
| Terminal for cond. cross section (mm <sup>2</sup> ) min.-max. |      | —2,5—2,5 | —6—6 | —6—6 | —6—6 | —6—6 | —16—16 | —16—16 | —16—16 |     |