

## Panel mounted receptacle

Part no. 75320

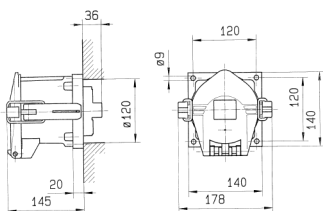


- aluminum enclosure
- Screw terminals
- seawater resistant products are available on request

## Technical specifications

Ampere	250 A
Poles	4 p
Voltage	400 V
Clock position	6 h
Hertz	50-60 Hz
Connection technology	Screw terminals
Contact	standard
Protection type	IP67
Weight	3200 g

## Drawing



Drawing  
1 MB 384  
Dim. in mm