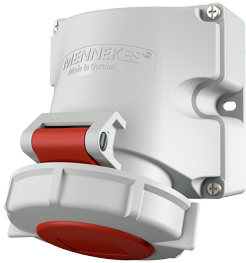


## Wall mounted socket

Part no. 9531

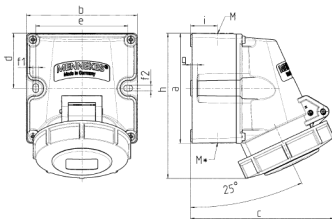


- screw terminals
- [highly resistant to chemicals](#)
- highly heat resistant contact carrier
- nickel plated contacts
- two external fixing points
- sockets are designed for adding an auxiliary contact switch
- enclosure base can be turned 180°

## Technical specifications

Ampere	16 A
Poles	7 p
Voltage	400 V
Clock position	6 h
Hertz	50-60 Hz
Connection technology	Screw terminals
Contact	highly heat resistant contact carrier, nickel plated contacts
Protection type	IP67
Enclosure material	Plastic, high resistance to chemicals / AMELAN
Weight	438 g
Certifications	EAC

## Drawing



Drawing	Amp.	16	32
1 MB 622	Poles	7	7
Dim. in mm	a	100	100
	b	101	109
	c	131	160
	d	50	50
	e	84	92
	f1	5.3	5.3
	f2	5.3	5.3
	g	6.5	6.5
	h	132	148
	i	24.7	27.5
	M	25 (optional M20)	32 (optional M25)
M*	2x25 (blind) to be cut out	2x25 (blind) to be cut out	
Max. cable diam. (mm)	18 (M25) and 15 (M20)	25 (M32) and 18 (M25)	
Terminal for cond. cross section (mm <sup>2</sup> ) min-max.	1.5	2.5	
	-4	-6	